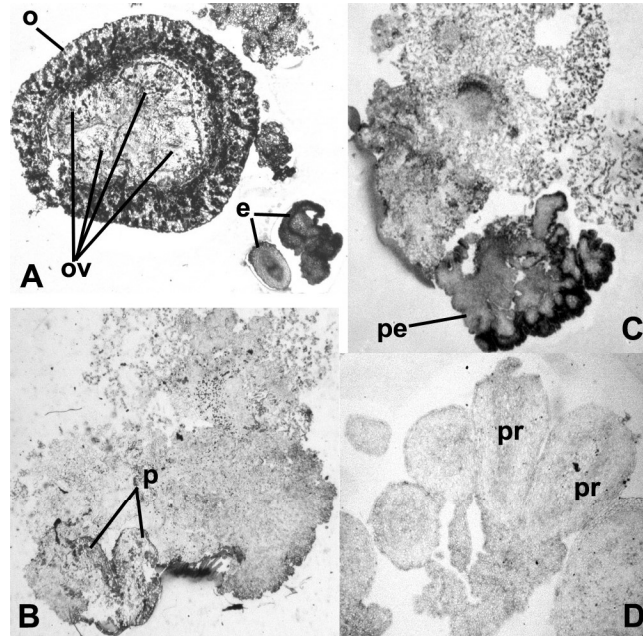


- page 240

**Detection and elimination of *grapevine fanleaf virus* in callus, somatic embryos and regenerated plantlets of grapevine**

Gambino G., R. Vallania, I. Gribaudo

Replace Figure 1 with the figure below



- page 254

**Effects of GVA elimination on physiological, agronomic and oenological characteristics of a *V. vinifera* Marzemino clone**

Malossini U., L. Zulini, A. Vecchione, E. Decarli, P. Bianchedi, R. Moscon, G. Nicolini

In the title given in Content (page 12) "gva" should be in Capitals

In Table 1, replace GLRaV 1 with GLRaV-1

In Table 2, Chlorophyll content is given in **mg g<sup>-1</sup>(fw)** (last line in Veraison and last line in Harvest subdivisions)

Page 255, replace idric with hydric

- page 256

**Effects of GLRaV - 1 elimination on physiological, agronomic and oenological characteristics of two cv. Marzemino clones**

Malossini U., L. Zulini, G. Nicolini, A. Vecchione, E. Decarli, P. Bianchedi, R. Moscon

Replace GLRaV 1 with GLRaV-1 in the whole document

In Table 2, Chlorophyll and carotenoids content are given in **mg g<sup>-1</sup>(fw)** (three bottom lines in Veraison and three bottom lines in Harvest subdivisions)