

Contrasting diversification patterns across wood rushes from *Luzula* sect. *Luzula* (*Juncaceae*) revealed by 3RAD genome-wide sequencing

Carolina Carrizo García^{a,b}, Valentin Heimer^{c,d}, Peter Schönswetter^c, Claudio Varotto^a, Božo Frajman^{c*}, Mingai Li^{a*}

SUPPLEMENTARY MATERIALS

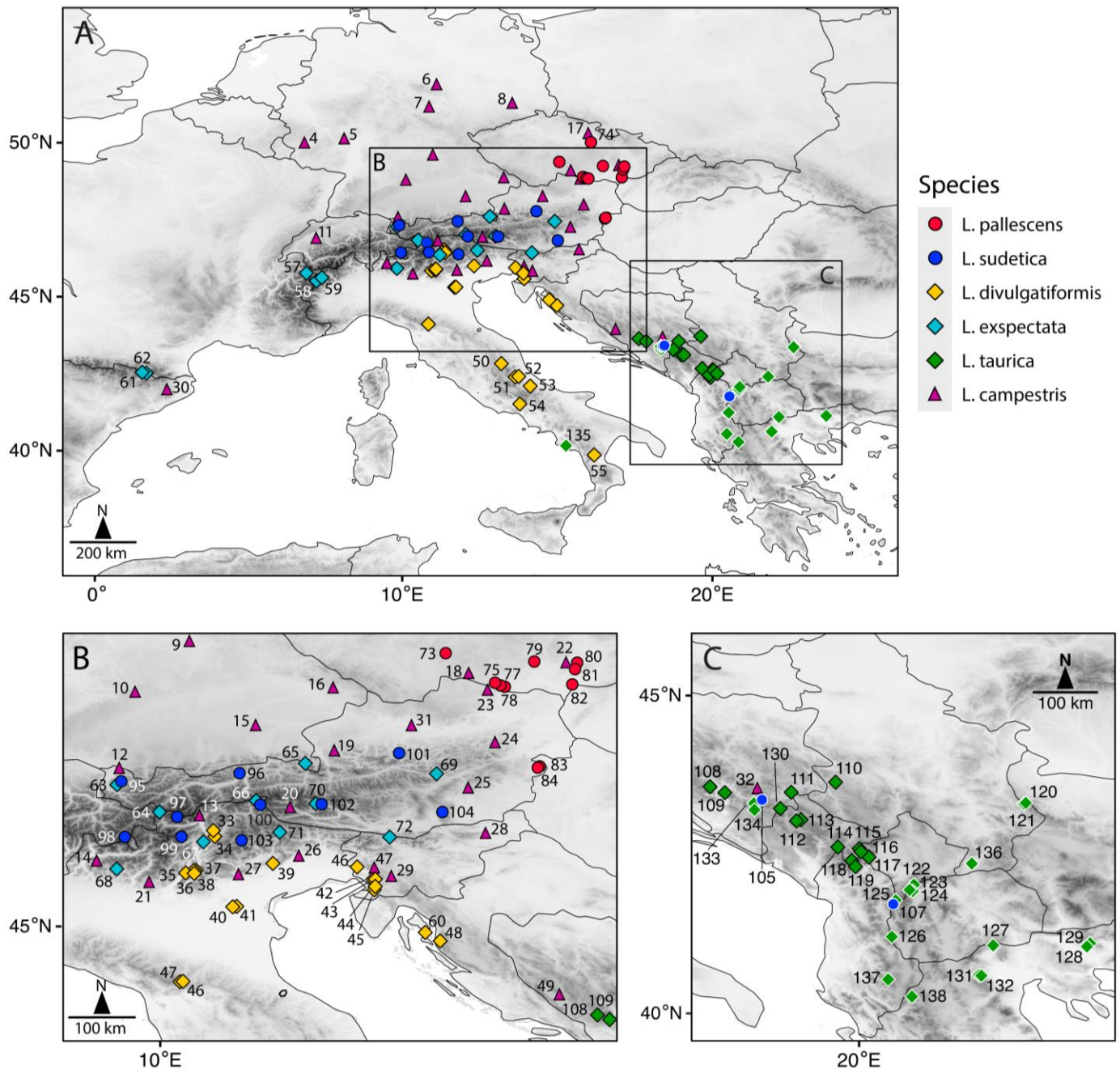


Fig. S1. Distribution of the studied populations of *Luzula* sect. *Luzula* in Europe. The identification numbers correspond to Table S1. Samples referred to as *L. cf. taurica* and *L. cf. sudetica* are indicated with symbols with white margin.

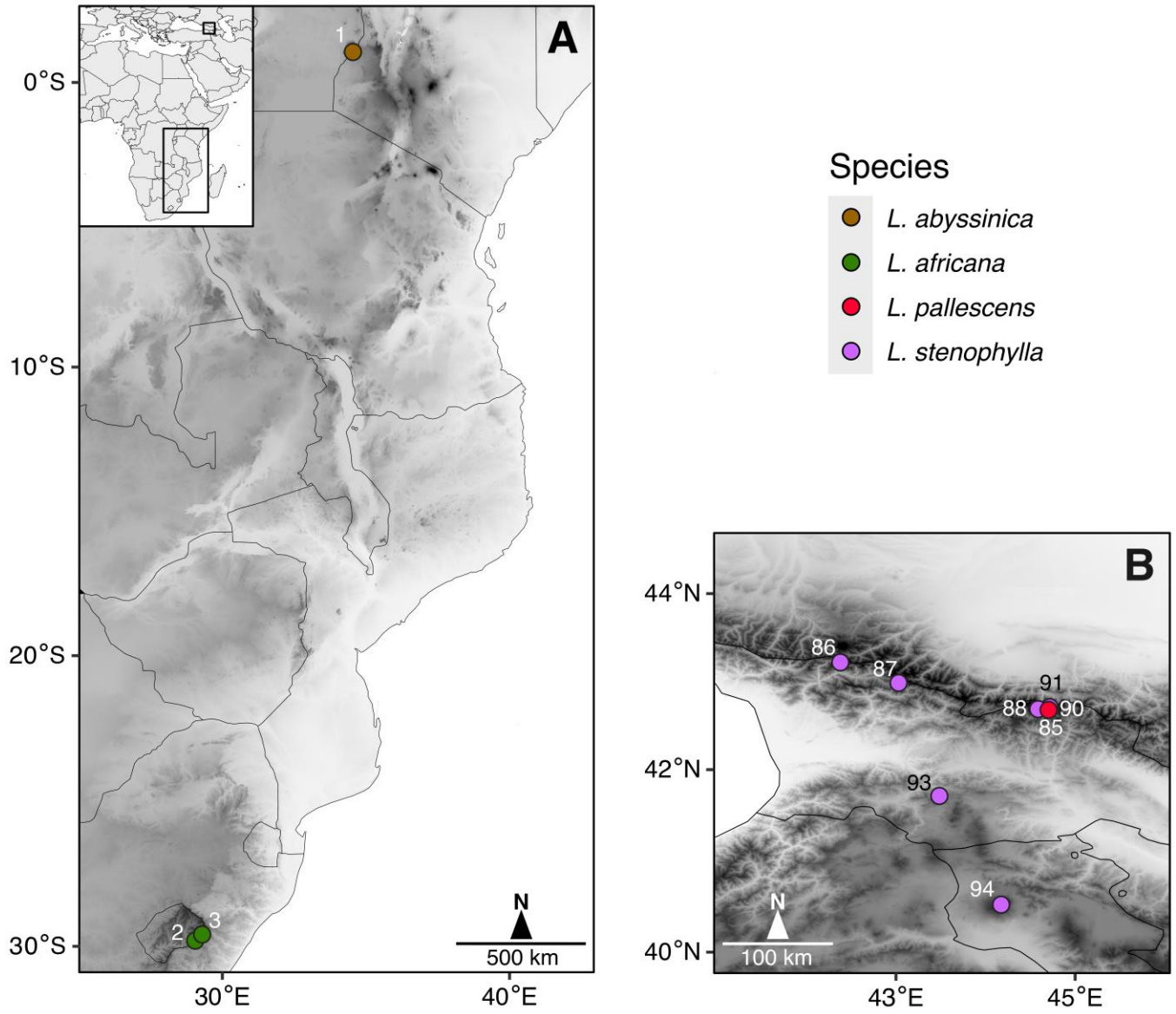
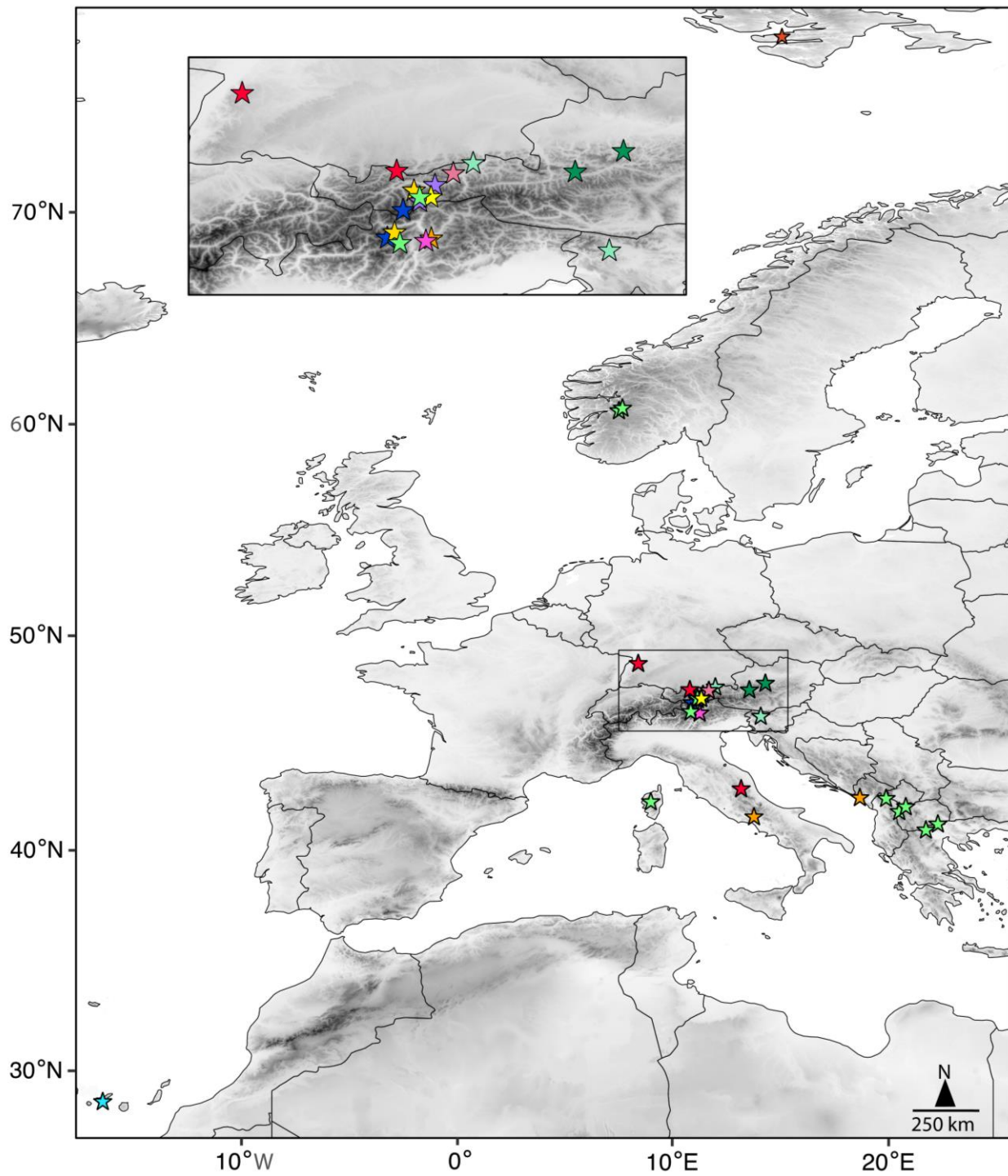


Fig. S2. Distribution of the studied populations of *Luzula* sect. *Luzula* in (A) eastern Africa and (B) Caucasus and southerly adjacent areas. The identification numbers correspond to Table S1.



- Species
- | | |
|-------------------|-------------------|
| ★ L. alpinopilosa | ★ L. luzuloides |
| ★ L. canariensis | ★ L. nivea |
| ★ L. forsteri | ★ L. pilosa |
| ★ L. glabrata | ★ L. spicata |
| ★ L. lutea | ★ L. sylvatica |
| ★ L. luzulina | ★ L. wahlenbergii |

Fig. S3. Distribution of the studied populations of species from different sections of *Luzula* used as outgroup in this study. See Table S1 for details.

Table S2. Primers used for amplification and sequencing of plastid regions.

| Plastid region | Primer | Primer sequence (5'-3') |
|-----------------------|---------------|--------------------------------|
| V1 | LZ_V1_1_F | GTATTCGTTGTCATGTGGG |
| | LZ_V1_1_R | CCACTGAGTTAAGTAGGTAATTCC |
| | LZ_V1_s2_R | CATATATTTGGTTTGAATTGAC |
| V5 | LZ_V5_2_F | GGACTTTCTATATCACTATGGACAG |
| | LZ_V5_1_R | TCTCCTATTTCATACTCGTGG |